



### Extend SharePoint with Cloud-Based Document Centric Applications

SharePoint is being broadly deployed in today's corporate environment for content sharing and collaboration. But leveraging SharePoint for content-centric business applications has been complicated and resource intensive. Functionality such as scanning, OCR, business process management (BPM), Fax, ERP integration, e-signature and records management all require third party products and significant IT investment. Without the ability to effectively automate departmental business processes, the promise of SharePoint remains undelivered. Perhaps this is why, in a recent Forrester Research report on collaboration, only 49% of small and medium businesses (SMBs) and 50% of enterprises report satisfaction with SharePoint and Lotus Notes.

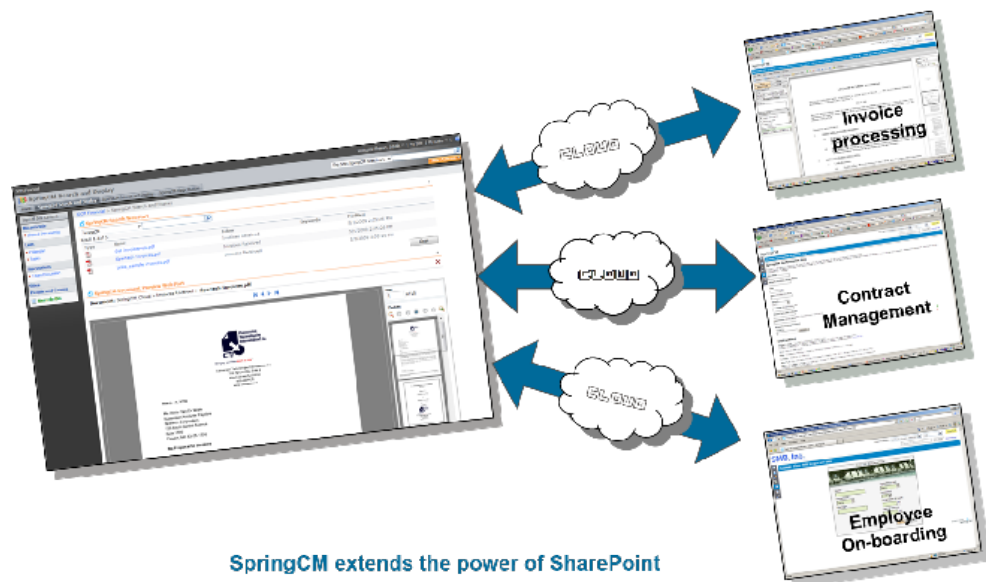


#### SpringCM Platform Features

- Standard Platform verbiage as used in other assets

#### Cloud Connector for SharePoint Features :

- Sign on to both SharePoint and SpringCM using Microsoft's Enterprise Single Sign on technology.
- Search, browse and view SpringCM ECM documents and content from your SharePoint interface.
- View a SpringCM document using our SpringCM Document viewer, or edit the Document metadata directly from SharePoint.
- Edit SpringCM documents in SharePoint using Microsoft Client integration capabilities.
- Easily switch between multiple SpringCM accounts using the SpringCM Cloud connector for SharePoint.



SpringCM extends the power of SharePoint

### Benefits of using SpringCM's Cloud Connectors for SharePoint: "25 Pre-Integrated ECM technologies in One, Comprehensive SaaS / Cloud delivery and extension of your SharePoint. Fast to Deploy – Low Cost"

The SpringCM platform pre-integrates over 25 technologies spanning ECM and BPM to enable you to automate complex processes in less time and at lower cost than previously possible. This is like getting several SharePoint partners in one. And because SpringCM is available as a hosted, on-demand (SaaS) solution, you benefit from:

**Low initial cost:** Since the solution is hosted you have no new hardware to buy or license fees to pay - just a reasonable annual subscription.

**Rapid deployment:** SpringCM is configured so it does not require extensive customization. You can be up and running in weeks, not months or years.

#### Benefits of the Sharepoint Connectors

**Agility:** The solution is easily changed as your business needs evolve – easy configuration instead of complex programming, with the ability to upload millions of documents.

"A March 2009 survey of 350 medium to large sized enterprises found that 47% use SharePoint primarily for file sharing (and/or as an internal portal) and that few use it for complex business processes, for records management."

— Survey by Information Architected on behalf of AIIM released March 3, 2009

# EXTEND SHAREPOINT WITH CLOUD-BASED DOCUMENT CENTRIC APPLICATIONS



Ease of use: Use SpringCM for power users, but integrate access to documents through Web Parts deployed to your SharePoint Farm.

Availability: SpringCM is a hosted Web-based application so employees can access their business solution from any computer with a browser and Internet connection.

Security: Integration with Active Directory enables single sign-on and access directly from SharePoint. Hosted in a secure SAS 70 data center, SpringCM offers full audit trails, a robust security model and strong password authentication to ensure the safety and availability of your key corporate content.

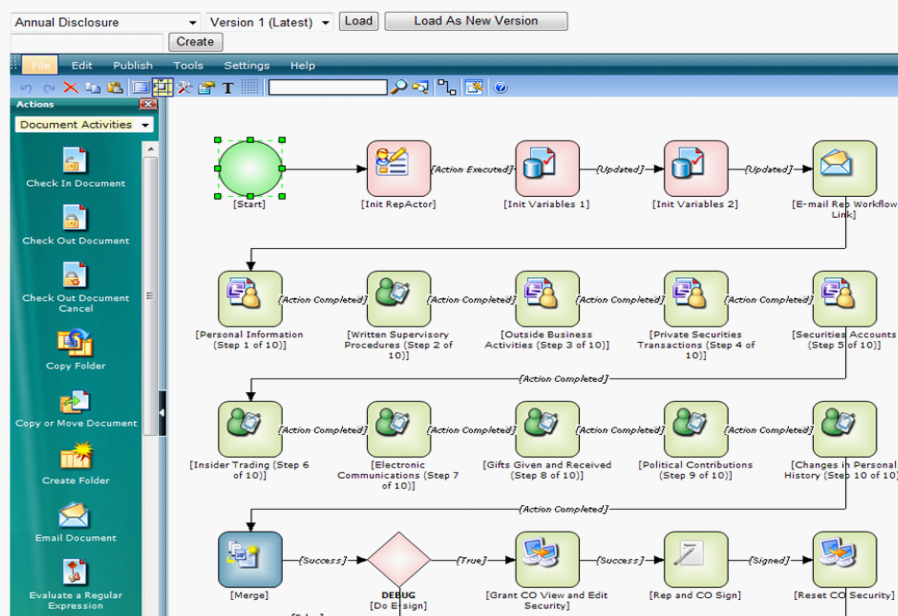
Use the SpringCM Cloud Connectors for SharePoint when:

- You need to manage and work with mostly documents as opposed to mostly data.
- You need key functions that are not native to the SharePoint platform, such as Fax, business process management

(BPM), document view and mark-up, e-signature, scanner integration, OCR.

- Time to deploy is key - you need a document process automated ASAP.
- The cost of SharePoint deployment and integration makes developing applications in SharePoint prohibitively expensive.
- Your application requires you to combine documents and scanned content with data in SharePoint.
- You need a single user interface for most of your users and powerful ECM functionality for others.

## SpringCM Advanced Workflow Business Process Management : Powerful – Quick – Easy to Deploy



Utilizing the Business Process Modeler, a SpringCM administrator can design and automate a business process that seamlessly interacts with their SharePoint deployment. SpringCM's advanced workflow is built on the same Windows Workflow foundation capabilities that exist in MOSS 2007, so integration of the workflow activities between SpringCM and SharePoint is seamless and easy to implement.

The business user can design and test business logic outside of their critical SharePoint environments, but still interact with the SharePoint user when information or decisions are needed. For example, a SpringCM workflow can create a SharePoint "Task" when users need to update an invoice metadata field to "Approved" in order for the invoice to be paid.

As a SaaS provider, SpringCM offers customers a wide range of integration options with other SaaS eco-systems such as Salesforce.com, Microsoft CRM, Oracle CRM and more.



2121 S. El Camino Real, San Mateo, CA 94403  
www.springcm.com 877.362.7273