



What's New in SpringCM Version 5.6

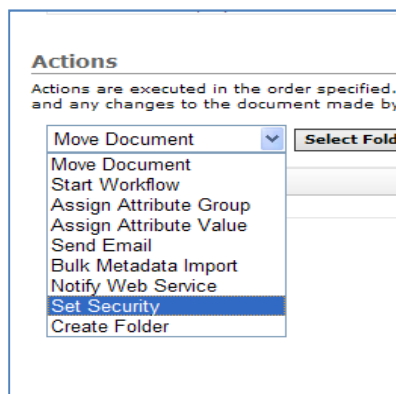
3/12/2010

Version 5.6 was designed to make SpringCM Document Management more powerful and easier than ever to use. Version 5.6 features enhancements like **Attribute Sets and Repeating Attributes** that enable granular indexing and search for more effective AP and Resume solutions, and **New Document Rules** that make workflow and collaboration processes configurable out-of-the-box. Highlights of the 5.6 release include:

Document Rules

Automate processes more quickly and efficiently with two new Document Rule Actions and Substitution Variables:

- Set Security on Documents - Configure at the User, Role, or Security Group level



Valid	Action	Details
✓	Set Security (Transactional)	View for User Administrator.
✓	Set Security (Transactional)	View, Edit & Delete for Marketing.

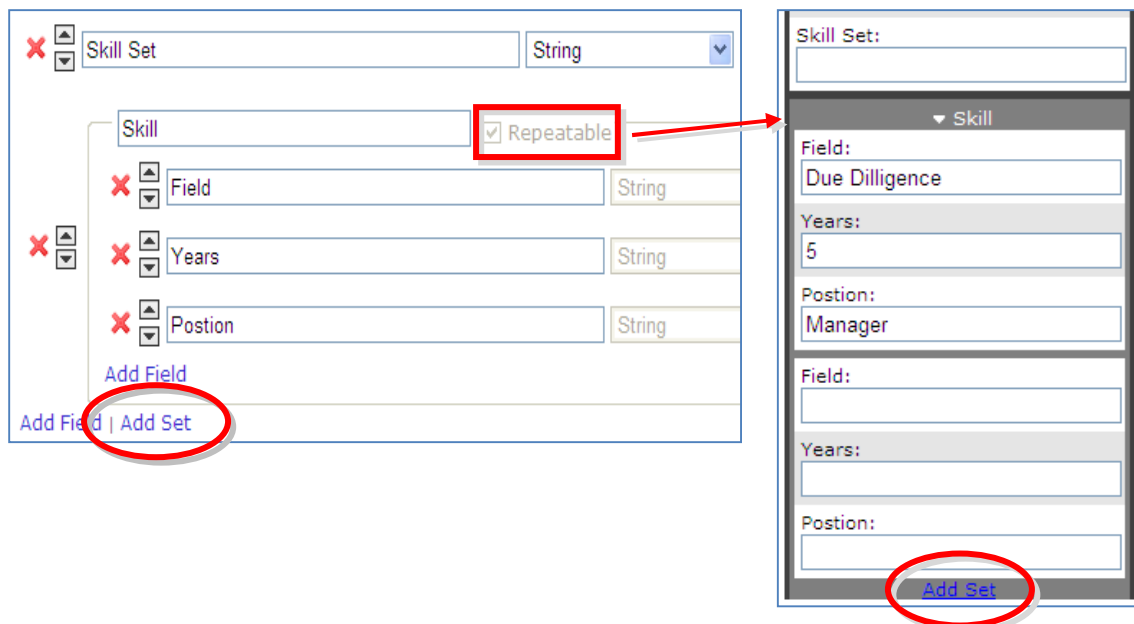
- Create a Folder – Dynamically add folders anywhere in a directory structure
- Substitution Variables – Create and name multi-level directories and move documents using XPath Expressions

Valid	Action	Details
✓	Create Folder (Transactional)	/Customers/[%/Document/Customers/Agent%]/
✓	Move Document (Transactional)	/Customers/[%/Document/Customers/Agent%]/

Attribute Sets and Repeating Attributes

Attribute Sets and Repeating Attributes can now be used to add detail or additional values when more than one instance of an attribute field type is required. Search is faster and easier, and targeted parameters lead to better results.

- Attribute Sets marked Repeating can be added dynamically in Document Preview



- AP Managers can index multiple invoice lines, and Hiring Managers can search for one or more skills on candidate resumes.

Delete an Attribute Group – Account Administrator can now delete Attributes Groups in use on documents

- Deleting an Attribute Group permanently removes its values from all documents
- Check points assure this irreversible process is not mistakenly executed

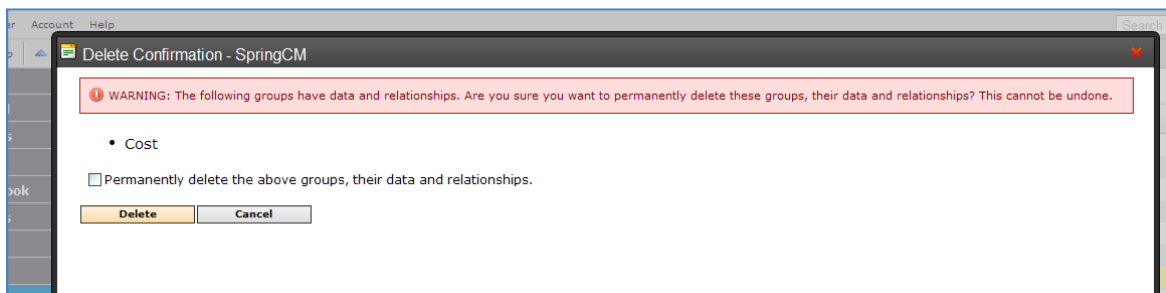
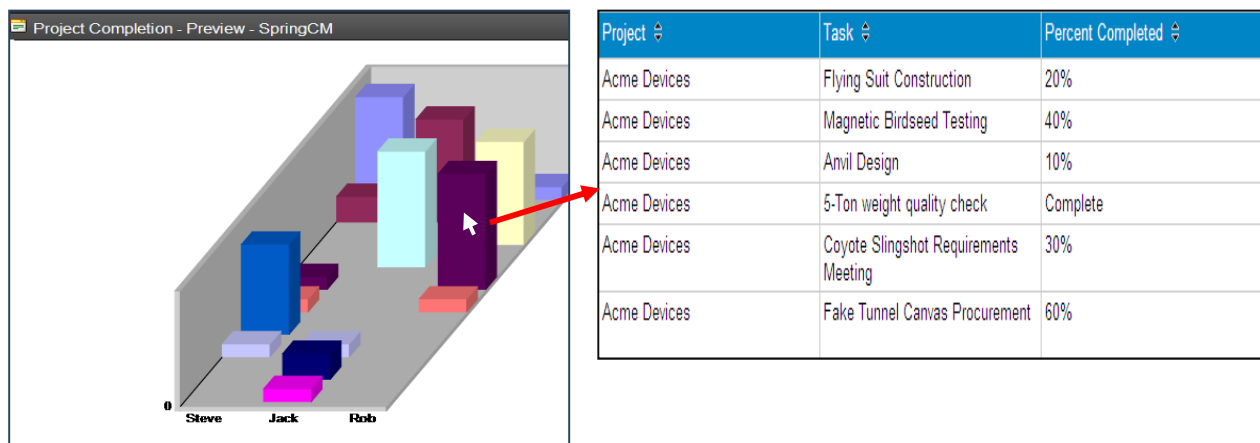


Chart to Data Drill-Down – Report-based Charts can now be clicked to reveal the data from which the Chart was generated.

- Works with Pie, Column, or Stacked Chart types
- Drill-Down is available from either the Dashboard or Reports Tab



Web Services

At the request of many users of the Web Services interface, SpringCM Version 5.6 offers the following changes to our APIs:

- Ability to retrieve Custom Form data
- Ability to retrieve the username of the creator or last modifier of a document

If you have questions about SpringCM Version 5.6 contact Client Services at Support@SpringCM.com or 877.362.7273.